

## How to update the firmware of the MDB/USB interface

**Important!** This document corresponds to the MDB/USB interface BD-4000/2.

The firmware of the MDB/USB interface can be programmed by a special software tool called MDB2USB.EXE. This tool can be found on the website of BonusData AG.



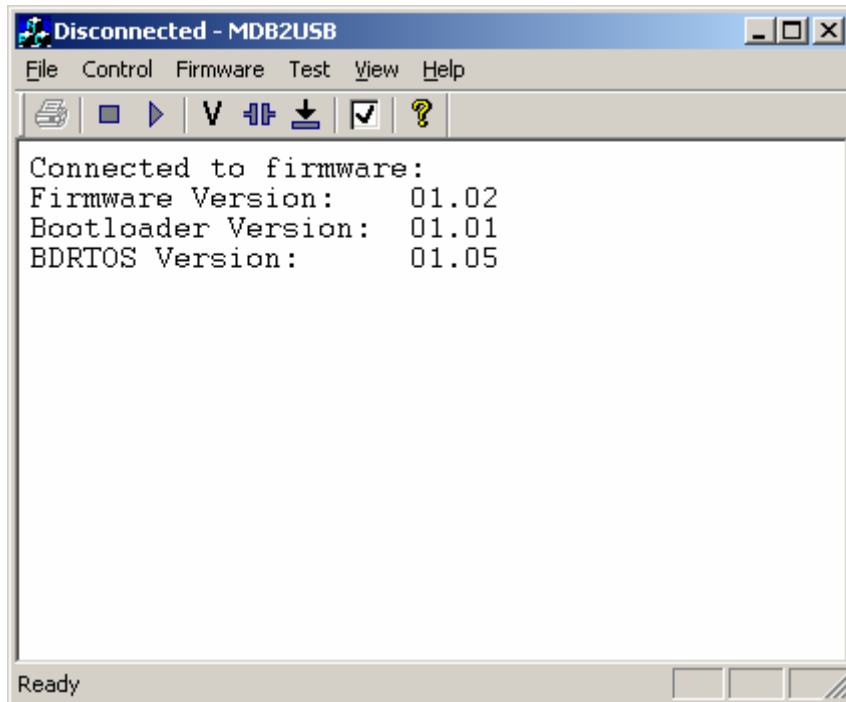
Use the link (URL) here: [http://www.bonusdata.net/toolbox\\_2/index.htm](http://www.bonusdata.net/toolbox_2/index.htm)

### Step 1: Prepare for the firmware update:

- The USB driver must be installed, so when the interface is connected, the green LED must light steady on.

### Step 2: Start the software tool MDB2USB.EXE:

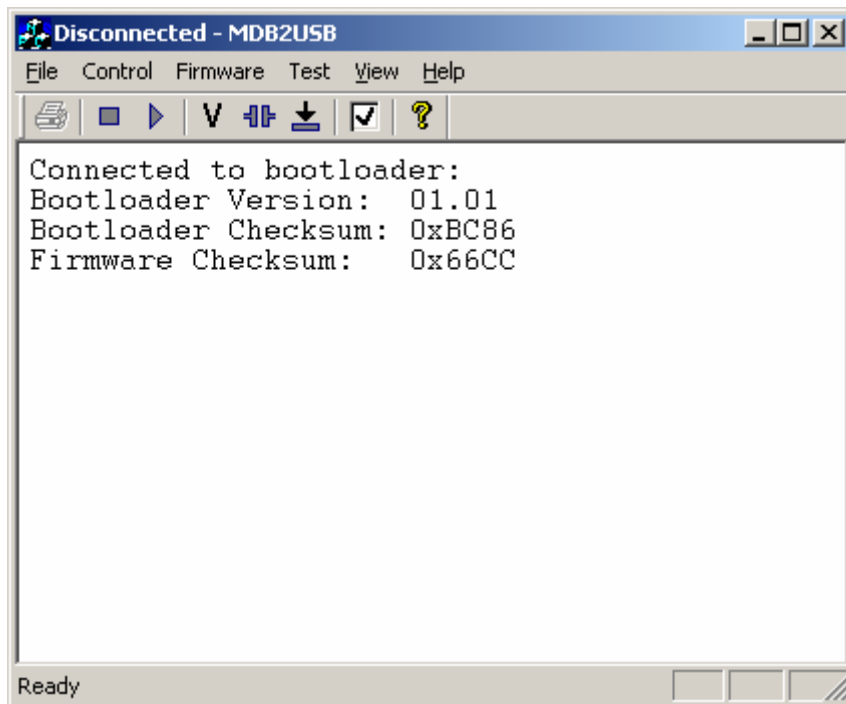
- Display the software version, it should show up like below.
- Menu -> Firmware -> Firmware Version.



The MDB/USB interface is running and displays the current software versions.

### Step 3: Enter to the boot loader:

- Enter the boot loader mode, the display should show as below.
- Menu -> Control -> Enter Bootloader.



The MDB/USB interface is now in boot loader mode and shows the current version and check sums.

**Note: If you can't enter boot loader mode with this method try following:**

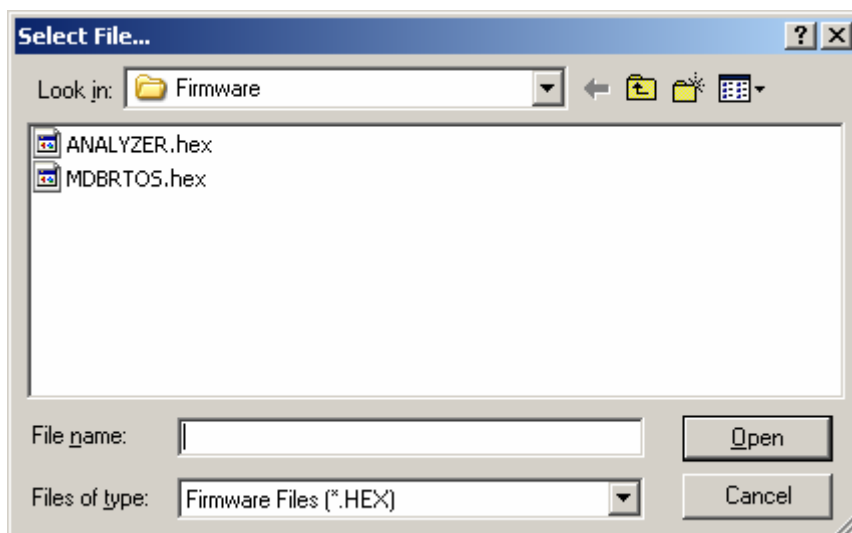
- Disconnect the MDB2USB interface from USB.
- Short the PIN 3 & 9 of the 12-Pin connector.



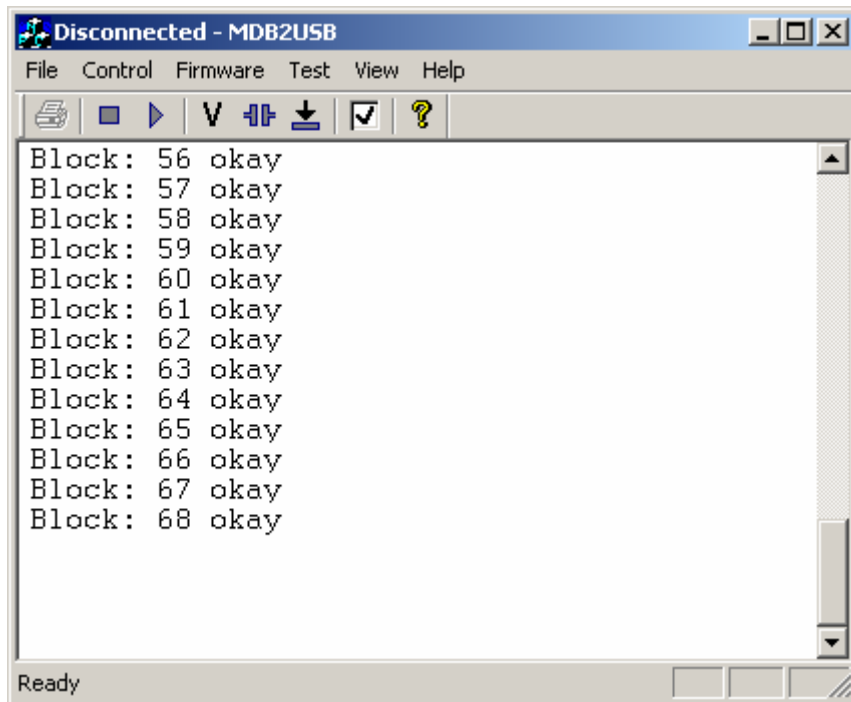
- 
- Reconnect the MDB2USB interface to USB.

**Step 4: Download the firmware:**

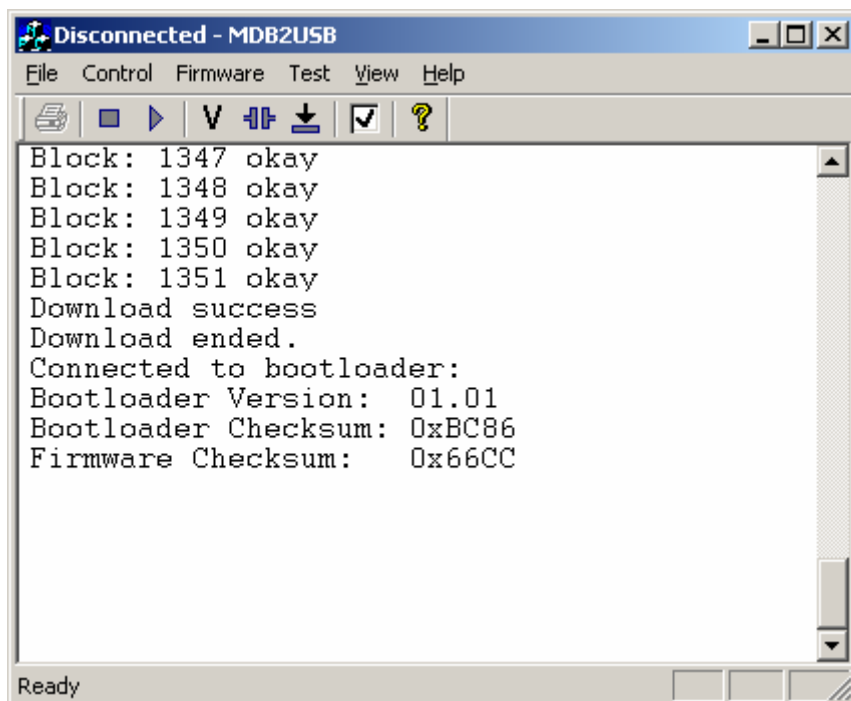
- Select the firmware file, e.g. MDBRTOS.HEX for download.
- Menu -> Firmware -> Firmware Update.



Downloading the firmware now:



If there are no errors, the update has been downloaded successfully.



Release: February 16<sup>th</sup>, 2011

Copyright © 2011 by BonusData AG, Tiergartenweg 1, CH-4710 Balsthal

<http://www.bonusdata.net>